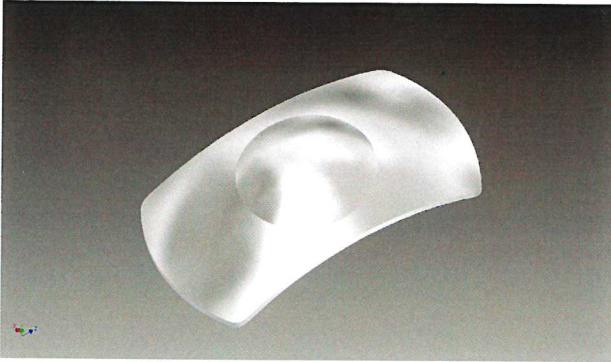




MPL™

Model No. 200

Medennium

**MPL™ 200 correction of high hyperopia**

- One piece
- Optic \varnothing 4.50 mm
- MPL - 100 total \varnothing =10.6 mm
- Convex - concave
- Width - 6 mm
- Powers from +3D to +15D by 0.5D

Unique and Safe Design

- Implantation between iris and crystalline
- Natural and precise self-centration by iris
- The posterior surface of the lens is designed to conform to the shape of the anterior capsule of the natural lens and to move with dynamic changes of the eye.
- Spherical and very flexible haptics
- Lens is not fixated to the ciliary sulcus
- Lens dimensions, shape and material properties enable “floating” on the natural lens without touching it.
- A layer of aqueous surrounds the MPL, avoiding contact to the crystalline lens and the pigment epithelium of the iris
- Overall diameter smaller than sulcus to sulcus distance avoiding compression of intraocular structures

Monobloc Silicone Polymer

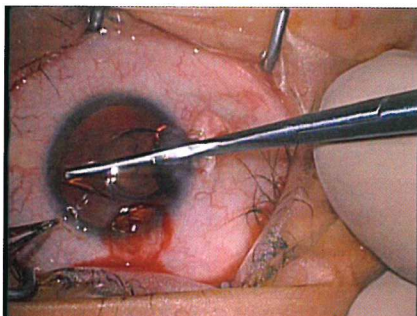
- Hydrophobic silicone material enables to float over the crystalline.
- High refractive Index 1.46

Optimized Design Features

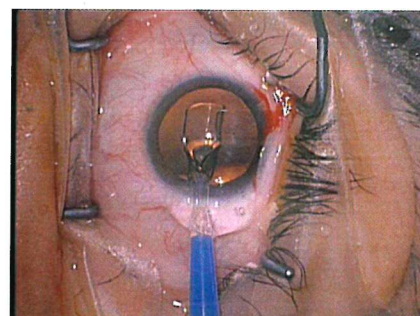
- Rounded edges throughout its entire contour.
- Maximized optic sizing as large as \varnothing 4.50 mm
- 50% thinner edges (0.1mm) securing the presence of a gap while improving buoyancy.
- Full spread of powers from +3.0 D up to +15.0 D in 0.5 increments.

Your choice of implantation

- With forceps
 - 3.2 mm incision
- With injector - Ophtec OD665-2.0 / RET INC. Comport Trimo REF: T22T7113
 - 2.2 mm incision



MPL implantation with forceps



MPL implantation with injector

A safe and effective predictable and stable method to correct high myopia / hyperopia(1)

(1)References:

1. Phakic lens holds promise for correcting myopia, hyperopia: better results seen in phase III trial of myopic refractive lens. *Ophthalmology Times August 1, 2002* J Talsama Reviewed by K. J Hoffer.
2. Phakic refractive lens experience in Spain. *JCRS Nov. 2002*
3. One piece "floating" refractive implant could prove to secure new option for the correction of myopia. *Eurotimes April 2003*.
4. European study's intermediary results favourable for myopics PRL: biconcave-shaped silicone floats in posterior chamber away from anterior capsule. *Ophthalmology Times Sept. 15. 2003* C. Guttman Reviewed by B. Philipson.
5. PRL one year postoperative results. *Arch Sic. Canar Oftal. 2003 No 14 R, Herrero, A Amigo.*
6. PRL two year postoperative results. *Arch Sic. Canar Oftal. 2004 No 15 R, Herrero, A Amigo.*
7. Phakic refractive lens implantation in high myopic patients: one year results. *JCRS 2004, vol 30 no 6 1190-1197 I G Pallikaris et al.*
8. PRL offers safe and effective treatment option for high ametropias. *Eurotimes June 2005. A. Koivula, M.A Teus-Guezala.*
9. Four European PRL studies demonstrate efficacy, safety. *OSN supersite Dec 2005 J. Schultz.*
10. Distance between PRL and crystalline lens with and without accommodation measured with Visante OCT. *ESCRS 2006 Free Paper A. Koivula, C. Zetterstrom.*
11. Correction of high myopia with Phakic refractive lens. *Techniques of Ophthalmology Sept. 2006*
12. Jongsareejit A MD, "Clinical Results with the Medennium Phakic Refractive Lens for the Correction of High Myopia," *J of Refract Surg 2006;22(9):890-897*
13. Koivula A MD, "Long-Term Results of Phakic Refractive Lenses for Correction of Myopia and Hyperopia", Karolinska Institute, Stockholm 2007, pp 1-44
14. Verde CM, Teus MA, Arranz-Marquez E, Cazorla RG, "Medennium posterior chamber phakic refractive lens for high myopia," *J Refract Surg 2007;23(9):900-904*
15. Mamalis N MD, Brubaker J MD, Davis D MD, et al., "Complications of foldable intraocular lenses requiring explantation or secondary intervention – 2007 survey update", *J Cataract Refract Surg 2008; 34(9):1584-1591*
16. Portaliou DM, MD; Kymionis GD, MD, PhD; Panagopoulou SI, PhD; Kalyvianaki MI, MD, PhD; Grentzelos M, MD; Pallikaris I, MD, PhD, "Long-term Results of Phakic Refractive Lens Implantation in Eyes with High Myopia," *Journal of Refractive Surgery, 2011; 27(11): 787-791.*
17. Pérez-Cambrodí RJ, MSc; García-Lázaro S, PhD; Blanes-Mompó FJ, MD; Piñero D, PhD; Cerviño A, PhD, "Phakic Refractive Lens to Correct Moderate to High Myopia Five Years after Implantation", *J Emmetropia 2011; 2: 73-78.*
18. Interaction of the corneal endothelium with the Phakic Refractive Lens. Report By Medical University of South Carolina, Storm Eye Institute. On file at Medennium Inc.
19. Shipunova A. M.D, Dementiev D. M.D, Syseova M. M.D. Comparison of the two generations of Medennium posterior chamber phakic intraocular lenses for correction of myopia. XXXIII Congress of the ESCRS, 5-9 Sept. 2015 Barcelona, Spain.



Medennium, Inc. 13 Av. De Montrouge E6,
R. Normandie, 92340 Bourg La Reine, France
Phone: 1.949.789.9000; Fax 1.949.789.9032; www.medennium.com



P/N 100506 Rev. A
EU Patents: EP0934038; EP1207818
EP1303233; EP1242007;
Other worldwide patents pending
MPL™ registered trademark of
Medennium, Inc.